



**Michigan  
Infrastructure  
Council**



**Michigan  
Transportation Asset  
Management Council**



**Michigan  
Water Asset  
Management Council**

**Building a Strategic  
Framework for Michigan's  
Integrated Infrastructure  
Asset Management**

# Identifying Opportunity in Challenge

- ▶ 21<sup>st</sup> Century Infrastructure Commission
  - ▶ Long-term vision and recommendations across transportation, water, energy, and communications
- ▶ Infrastructure Asset Management Pilot
  - ▶ Focused, cross-asset inventory and assessment in 16 West and Southeast Michigan Counties



ASSET  
MANAGEMENT  
PILOT



# Regional Asset Management Pilot

- ▶ Announced April 2017
- ▶ Comprised of three core groups with over 120 members:
  - Advisory Board
  - Stakeholder Team
  - Subject Matter Experts
- ▶ Asset classes included:
  - Drinking Water
  - Storm Water
  - Wastewater
  - Transportation (Culverts)
  - Private Utilities
- ▶ Provided a long-term, comprehensive set of recommendations to the Governor by end of April 2018

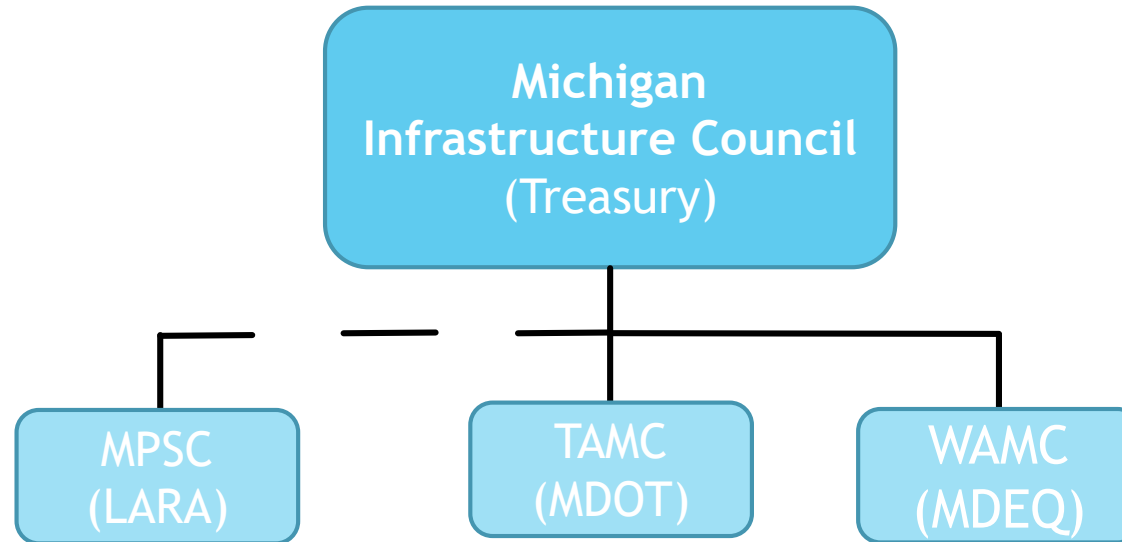


# Michigan's Infrastructure Challenges

- ▶ Expansive and Diverse Network
- ▶ Aging and in need of costly repairs/replacements
- ▶ Expensive and temporary “emergency” fixes, instead of proactive maintenance
- ▶ Limited and unsynchronized funding sources
- ▶ Siloed ownership and uncoordinated repair cycles



# Building the Foundation for Statewide Integrated Asset Management



- P.A. 323 of 2018 creates the Michigan Infrastructure Council (MIC)
- P.A. 324 of 2018 creates the Water Asset Management Council (WAMC)
- P.A. 325 of 2018 realigns the Transportation Asset Management Council (TAMC) under MIC



# The Michigan Infrastructure Council

Define a vision for Michigan's infrastructure that provides the foundation for public and environmental health, economic prosperity and quality of life



## Water Asset Management Council

Foster and support a statewide culture of asset management focused on the role of water infrastructure in providing public health and optimizing stakeholder value

# WAMC Asset Management Template

- ▶ Asset inventory
- ▶ Level of service analysis
- ▶ Risk of failure analysis
- ▶ Anticipated revenues and expenses
- ▶ Performance outcomes analysis
- ▶ Description of plans to coordinate
- ▶ Proof of acceptance by governing body
- ▶ WAMC establish a schedule so 1/3 of asset owners submit annually
- ▶ Owners must **implement** approved plans by October 1, 2024
- ▶ Owner defined as - serves 1000 or more individuals and required to have an asset management *plan* thru a NPDES permit or Safe Drinking Water Act





**Michigan  
Infrastructure  
Council**



**Michigan  
Water Asset  
Management Council**



**Michigan  
Transportation Asset  
Management Council**

## Questions

Kelly Green

Infrastructure Coordinator

MDEQ - Lansing

[greenk1@Michigan.gov](mailto:greenk1@Michigan.gov)

[Michigan.gov/MIC](http://Michigan.gov/MIC)