

# Water Resources

- Protect and Monitor
  - 4 Great Lakes
  - 11,000 inland lakes
  - 36,000 river miles
  - 6.5 million acres of wetlands
  - 70,000 acres of coastal dunes



For swimming, fishing, drinking water, and aquatic ecosystems.

# Water Vision

Michigan is defined and driven by water



# Water is Important

- States – Water's Importance in Economic Development
- #1 Issue Identified by States

# Water is Important

- World Economic Forum
- Water Crises is Top Global Risk
- Most Serious Threat to Business and Society

# Water and Economy

- How much of Michigan's economy is related to water?
- We don't know.

# Water and Economy

- Fishing Expenditures = \$2.4 billion
- Great Lakes Fishing = \$7 billion
- Boating = \$4 billion
- Agriculture = \$92 billion
- Manufacturing = \$58 billion

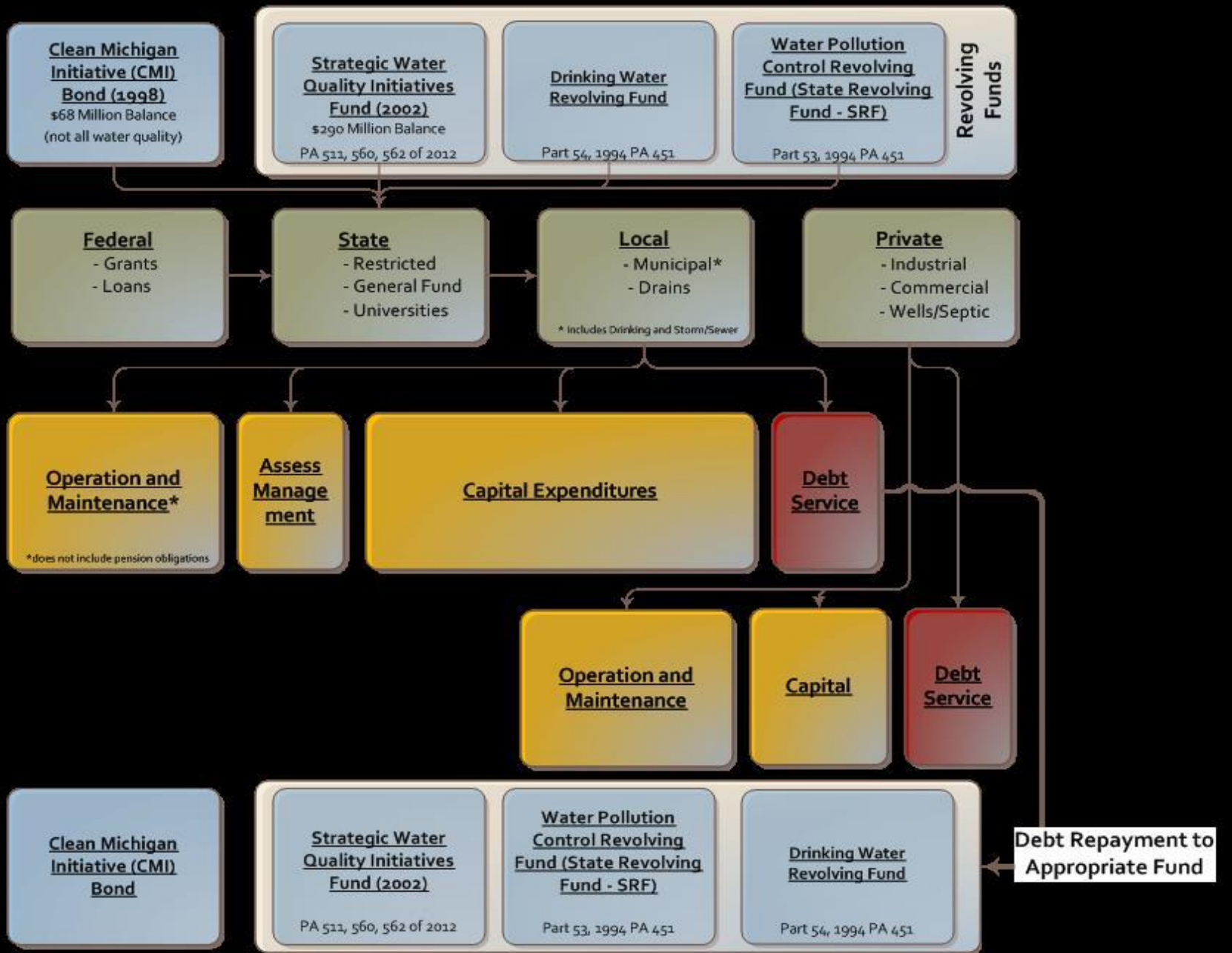
# What is Water Worth?

- Water is Free
- Pay to Pump It, Deliver It, and Treat It
- Zero Price but Infinite Value

# Enterprise Budget for Water

- How much money is collected (revenue) and spent (expense) across the state in support of drinking water, storm water management, and wastewater management?





# Relative Amounts

- Federal            \$160 million
- State                \$260 million
- University        \$80 million
- Local                \$3,200 million

# Per Person Costs

- Infrastructure
- \$550/Year
- 60% of Population

# Needs

- Drinking Water, Storm Water, Wastewater
- 60 to 70% of Sewer System Near End of Useful Life
- \$20 Billion Over 20 Years

# Subsidies

- Why subsidize thru federal and state taxes?
- Could we fund more efficiently at the local level, without federal and state subsidies?

# History

- Construction Grants
- State Revolving Fund
- Next Step? - Local funding? End of subsidies?

# Preference

- Willingness to Fund Drinking Water Projects
- Less Willing to Fund Wastewater Projects
- Immediate Benefit Not Seen

# Next steps

- Michigan Blue Ribbon Panel
- Address Infrastructure Funding Gap
- Need to also finish enterprise budget, including other water infrastructure such as dams, harbors, and county drains.